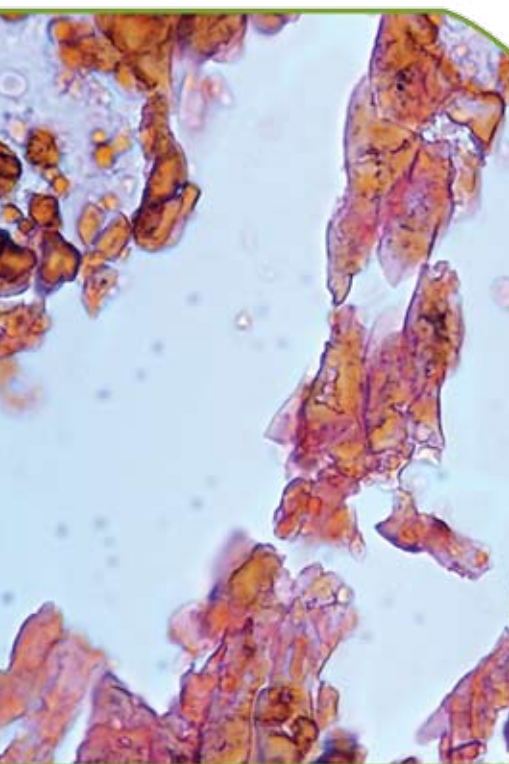




Von Kossa Method for Calcium Kit



Cat.#: 24633

*Demonstrate Calcium Phosphate
and Calcium Carbonate Salts*



Used as a bone stain to indicate osteomalacia, or in other paraffin embedded tissues to stain calcium deposits seen in metabolic diseases, Paget's disease, renal osteodystrophy and hyperparathyroidism, necrotic areas associated with TB, infarction (Gandy Gamna bodies), atheroma in blood vessels and Malakoplakia in the bladder (Michaelis-Gutman bodies).

Results:

Mineralized bone, calcium deposits - black
Osteoid, supporting tissue and structures - red

Note that when used in skin specimens that the silver will reduce the melanin in the skin, to also give a black deposit.