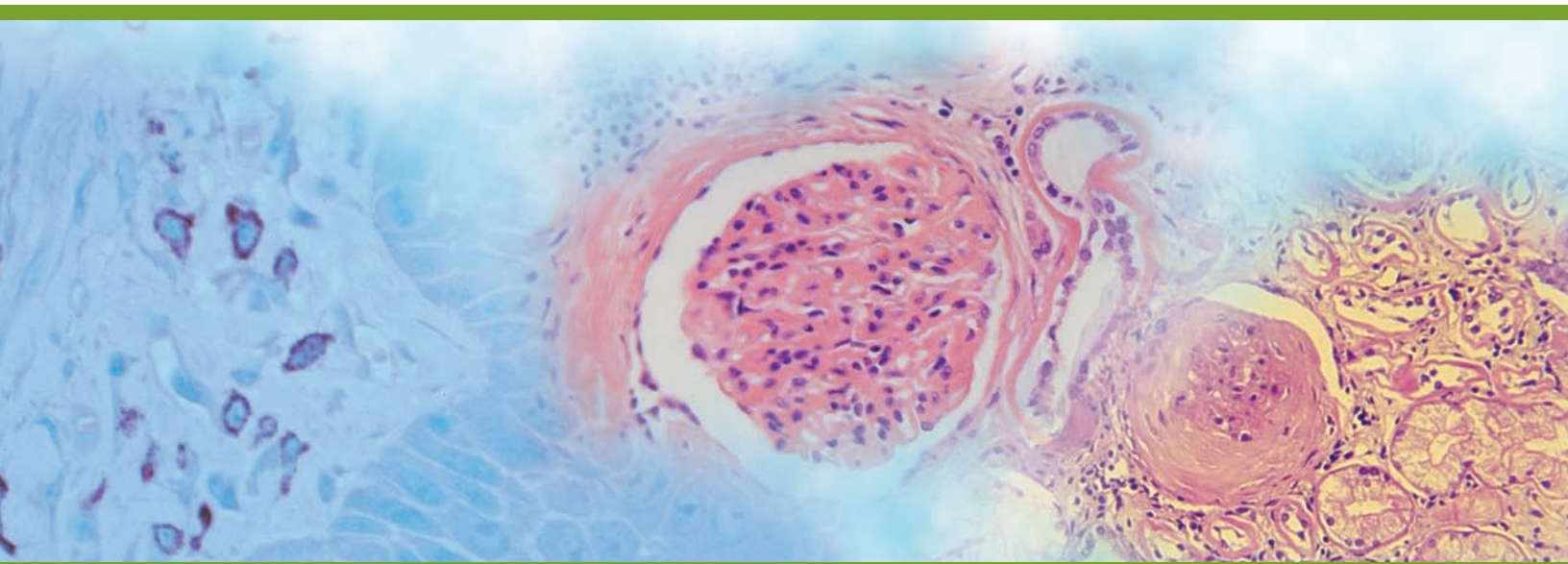


U.S. Corporate Headquarters
400 Valley Road, Warrington, PA 18976
Phone: 1 (800) 523-2575 / (215) 343-6484
Fax: (800) 343-3291 / (215) 343-0214
email: info@polysciences.com

Polysciences Europe GmbH
Handelsstr. 3 D-69214 Eppelheim, Germany
Phone: (49) 6221-765767
Fax: (49) 6221-764620
email: info@polysciences.de
www.polysciences.com

Histology Product Guide



- Grossing
- Fixation
- Processing
- Embedding
- Microtomy
- Staining
- Adjuncts

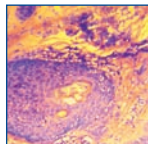
Grossing

Fast Fix (Frozen Fix)

One step rapid staining method for frozen sections. Safe for all tissue types.

Size: 100ml, 500ml Cat. #: 24607

Flash Dip FNA/H. Pylori Stain Kit



Used for blood smears for rapid differential assessment of detecting the *H. pylori* microorganism and frozen sections. Very useful to pathologists for immediate interpretation of fine needle aspiration biopsies. Kit contains a fixative for air-dried cell suspensions or touch prep slides and frozen sections.

Size: 250ml, 500ml Cat. #: 24606

Michel's Buffer



Holding medium/transport buffer for tissue undergoing immunofluorescent studies. *Not to be used for tissues used in Fluorescent In-situ Hybridization (FISH).*

Size: 500ml, 1 gallon Cat. #: 24353

Peel-A-Way® Molds



Easy to use and saves time, this unique design will neatly Peel-A-Way from a solidified embedded block. No need for trimming. Can be used with paraffin, JB-4®, GMA, Osteo-Bed and MMA embedding resins. Especially useful for frozen sections where orientation is critical and defrosting during transfer to cryostat chuck is an issue.

Size: 1 case (T-8, 288 molds)	Cat. #: 18985
Size: 1 case (T-12, 288 molds)	Cat. #: 18986
Size: 1 case (S22, 288 molds)	Cat. #: 18646A
Size: 1 case (R30, 288 molds)	Cat. #: 18646B
Size: 1 case (R40, 264 molds)	Cat. #: 18646C
Size: 1 pkg (assorted, 48 molds)	Cat. #: 18646D

PolyFreeze (Frozen Mounting Medium)



Material sections flawlessly at routine frozen specimen thickness of 5-6µm and leaves no slide residue. Provides for -20°C cryostat LM sectioning in rapid set embedment. Water soluble.

Size: 1case (6 x 120ml bottles) Cat. #: 19636

PolyTransport Buffer



Preserve Your Specimens "To Go" - Medium used to transport and preserve specimens from surgery to the point of grossing for fixation prior to further processing.

Size: 250ml, 500ml Cat. #: 24311

Terry's polychrome methylene blue 2% aqueous

A STAT staining method for unfixed and fixed tissue. Excellent for frozen sections.

Size: 470ml Cat. #: 09978

Tissue Marking Dyes



Our Marking Dyes for Tissue are designed to perfect orientation of excised surgical specimens. This method of permanently marking the margins of tissue specimens is very beneficial to surgeons and pathologists testing for skin cancer. This method of marking multiple margins of specimens was originally documented by Dr. Frederick Mohs. Available colors: red, green, blue, yellow, black, orange and purple.

Features:

- No post fixative required - saves time
- Fast drying - high quality opaque pigments
- Dyes can be used on fresh or formalin fixed specimens
- Maintains brilliant color through all phases of processing
- Will not clog automated tissue processors
- Convenient 2oz. and 8oz. replacement bottles available

Size: 1 kit (7 Color Kit) Cat. #: 24772
Size: 1 kit (5 Color Kit) Cat. #: 24108

Fixation

Formaldehyde, Ultrapure, methanol free, EM grade

Suitable for both electron and light microscopy. Easily penetrates large blocks of tissue. When used in combination with glutaraldehyde, it fixes delicate tissues such as brain in vascular perfusion. Avoids the problem of having to depolymerize paraformaldehyde. Used in Karnovsky's fixative in conjunction with your own buffer system.

Size: 1 liter, 4x1 liters (10%) Cat. #: 04018
Size: 20x10ml (16%) Cat. #: 18814

Formalin (10% NBF)

Formalin is the most widely used fixative for processing tissues in routine histology laboratories. Used for IHC in the clinical laboratory for paraffin embedded tissues. Volume of the fixative should be 15-20 times that of the tissue.

Size: 3.75 liters, 20 liters Cat. #: 08379

Glutaraldehyde



Polysciences was the first to develop a superior grade of glutaraldehyde. Each batch of vacuum distilled glutaraldehyde manufactured by Polysciences is analyzed to maintain consistent high quality and freedom from contaminants. Each ampoule is fitted with an ampoule cracker for added safety. We offer both Biological and EM (vacuum distilled) grades of Glutaraldehyde.

Biological Grade, 50% glutaraldehyde has been purified to minimize by-product formation and maximize shelf life. Suitable for most morphological studies.

Size: 500ml, 1 liter, 4 x 1 liter Cat. #: 00377

EM Grade, 50% (vacuum distilled), is recommended for histological or immunological techniques demanding purity and longer stability.

Size: 100ml, 5 x 100ml, 10 x 10ml Cat. #: 18428

Hollandes Fixative



Excellent for large and small gastric tissue, GI biopsies or any tissues that contain large amounts of inflammatory and mucinous cells. Hollandes' solution is a preferred fixative for flagellates and ciliates which are demonstrated with silver stains. Useful for routine surgical specimens.

Size: 500ml, 1 gallon Cat. #: 24354

Processing

Alcohol Reagent (100%), histology grade

Suitable for most histological procedures. Our histology grade alcohol reagent is composed of 90 parts ethyl alcohol, 5 parts methyl alcohol and 5 parts isopropyl alcohol, v/v blend. Preferred mixture for dehydrating tissue samples prior to embedding.

Size: 1 gallon Cat. #: 09860

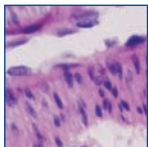
Bouin's Fixative



Picric acid, formalin and acetic acid fixative. Excellent for use in preserving soft and delicate tissue structures. The shrinking induced by the picric acid is offset by the swelling of the glacial acetic acid.

Size: 1 liter, 1 gallon Cat. #: 16045

Clear-Advantage Xylene Substitute



Safe xylene substitute for processing, staining and coverslipping. Clear-Advantage is virtually odorless and offers improved clearing performance compared to these types. Tissue morphology and cell structure definition is exceptional!

Advantages:

- Slides dry 3 times faster than with xylene
- Slides clear faster and crisper
- Paraffin dissolves 50% faster than with xylene
- Virtually odorless, low toxicity and stable
- Recycling is faster in conventional recycling units
- Decreases "tissue hardening"
- Compatible with most automated processing units

Size: 1 gallon, 4 x 1 gallon Cat. #: 24770

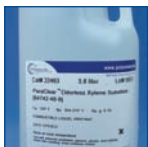
Hartmann's Fixative (modified Davidson's fixative)



Overnight fixative for the visualization of lymph nodes in radical dissection specimens. Helpful with both breast and colon specimens by turning lymph nodes white.

Size: 500ml, 1 gallon Cat. #: 24355

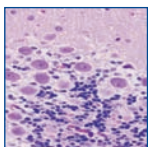
ParaClear Odorless Xylene Substitute



ParaClear is a naphtha-petroleum derivative, that can replace xylene for clearing. Odorless and presents a low hazard for routine histological processing and staining. ParaClear will remove alcohol during the final steps of routine tissue processing and is miscible with paraffin for infiltration. It has a higher flash point than xylene, reducing the flammability danger to the laboratory.

Size: 3.8 liters, 4 x 3.8 liters Cat. #: 22463

Xylene, histology grade



Routine clearing agent used in histology. Can be used with Canada balsam in oil-immersion microscopy. Molecular Weight: 106.17

Size: 1 gallon Cat. #: 08389

Embedding - Paraffin

GemCut™ Paraffin



GemCut Paraffin is a high polymer paraffin for routine embedding and cutting. Specially formulated for high humidity environments, GemCut gives superior cutting with low compression. The color of the wax makes it easier to visualize small biopsies. Melting Point: 56-58°C. Available in 6 colors.

Size: 1 case (4 x 2kg) Pink Sapphire	Cat. #: 24361
Size: 1 case (4 x 2kg) Aquamarine	Cat. #: 24362
Size: 1 case (4 x 2kg) Citrine	Cat. #: 24363
Size: 1 case (4 x 2kg) Emerald	Cat. #: 24364
Size: 1 case (4 x 2kg) Opal	Cat. #: 24365
Size: 1 case (4 x 2kg) Amethyst	Cat. #: 24366

Peel-A-Way® Micro-Cut Paraffin



Low polymer content formulation gives improved viscosity, infiltration, and embedding. The translucent appearance of the paraffin allows for excellent tissue visibility. The lower polymer content also makes deparaffination easier with all types of clearing agents. Available in three melting points.

Size: 1 case (4 x 2.5kg), 52° to 54°C	Cat. #: 24201
Size: 1 case (4 x 2.5kg), 56° to 58°C	Cat. #: 24198
Size: 1 case (4 x 2.5kg), 62° to 64°C	Cat. #: 24202

PolyFin® Paraffin



Mixture of fine paraffin waxes and copolymer alloys in convenient pellets. Produces ultra-thin compression free ribbons. Functions flawlessly in pressure/vacuum fluid flow processors. Provides maximum support for both hard and soft tissue samples while maintaining exceptional clarity. Low 55°C melting point eliminates excessive heat distortion during tissue processing.

Size: 1 case (8 x 1kg), 1 keg (15kg) Cat. #: 19562

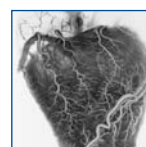
Embedding - Plastic

Araldite 502-Poly/Bed® 812 Embedding Kit

We offer Araldite 502 and Poly/Bed 812 for researchers to utilize Mollenhauer's findings. Poly/Bed 812 is an exact chemical match for Epon 812. Both Araldite 502 and Poly/Bed 812 are useful as an embedding medium with acetone or alcohol dehydration. Instructions included. **Kit contains:** 500g Poly/Bed 812, 500g Araldite 502, 450g DDSA, 100g DMP-30.

Size: 1 kit Cat. #: 02595

Batson's #17 Anatomical Corrosion Kit



For ambient temperature preparation of exact anatomical corrosion specimens by injection of liquid plastic. After hardening, the tissue is corroded away by a caustic solution, yielding a durable, scientifically exact model for anatomical study. **Kit contains:** 940ml monomer base, 100ml catalyst, 50ml promoter, 10g pigment red, 10g pigment blue.

Size: 1 kit Cat. #: 07349

Embed-It™ Low Viscosity Epoxy Kit



Modification of the Spurr's formulation, the *Embed-It™* Low Viscosity Epoxy Kit can be used for embedding biological, material and mineralogical samples. This kit is composed of two very low viscosity components (~65cps) packaged in easy to dispense squeeze top bottles. The resin readily penetrates into the specimen and cures to a clear hard solid overnight at 60°C.

Size: 1 kit Cat. #: 24300

Immuno-Bed Kit



Immuno-Bed has been designed for use with immunohistochemistry (IHC) studies. Sections should be completed and stained as soon as possible after polymerization is complete, within 2 to 3 days. Immuno-Bed is a glycol methacrylate based embedding kit with performance similar to JB-4 and JB-4 Plus in tissue infiltrations, embedding and cutting procedures. The embedded blocks are clear for excellent tissue visibility. **Kit contains:** 800ml Solution A, 30ml Solution B, 12g Solution C.

Size: 1 kit Cat. #: 17324

JB-4 Plastic Block Holders



Easy to store plastic block holders for resins attach to Polysciences' reusable chucks designed for most commonly used microtomes. Holders have a matte surface for easy marking and a large center hole to prevent bubble formation. Block holders fit securely onto molding cup tray cavities.

Size: 1 box (50) Cat. #: 15899

JB-4® Embedding Kit



Water-soluble, GMA based, plastic resin kit intended for use in the preparation of embedded samples for high resolution light microscopy. JB-4 yields semi-thin sections (0.5µ-2µ) with excellent morphological preservation. Clear casts are obtained in 90 minutes or less at room temperature. JB-4 is the leading water-soluble plastic embedding kit for light microscopy. **Kit contains:** 800ml solution A, 30ml Solution B, 12g Catalyst.

Size: 1 kit Cat. #: 00226

JB-4 Plus® Embedding Kit



JB-4 Plus offers all the benefits of JB-4, plus some added features: cooler acting accelerator system for greater protection of tissue components; yields crystal clear non-yellowing blocks; the blocks resulting from JB-4 Plus are ideal for processing dense material such as bone. **Kit contains:** 500ml Solution A (Monomer), 15ml Solution B (Accelerator), 8g Benzoyl Peroxide, Plasticized (Catalyst).

Size: 1 kit Cat. #: 18570

Lowicryl™ HM20, Non-polar, Hydrophobic, -70°C Embedding Kit

Lowicryl® HM Kits are non-polar and are used to produce high contrast images of completely unstained thin sections by Z-contrast. HM kits are particularly suitable for dark field observation because of their relatively low density.

Size: 1 kit Cat. #: 15924

Osteo-Bed Bone Embedding Kit

Suitable for use with large and small mineralized (undecalcified) bone sections. Yields clear, hard blocks for cutting sections with a heavy duty microtome. Osteo-Bed solvent is available to remove plastic from sections for brilliant staining. Not water-soluble. **Kit contains:** 900ml Osteo-Bed Resin Solution A, 2 x 12gm Benzoyl Peroxide, Plasticized (Catalyst).

Size: 1 kit Cat. #: 17734

Microtomy

Aqua-Poly/Mount



Water-soluble, non-fluorescing mounting medium. Formulated for mounting sections from aqueous solutions. Useful for immunofluorescent techniques. Aqua Poly/Mount can also be used for frozen sections, fat stains and immuno-stains when aqueous mounting media is required. Use Aqua-Poly/Mount with most fluorescent dyes and stains.

Size: 20ml, 100ml, 5 x 20ml Cat. #: 18606

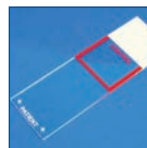
CitraMount™ Medium



Butyl acetate and acrylic mixture is the first mounting medium developed that allows coverslipping directly from d-limonene based clearants! Superior results are also obtained with xylene and routine clearing agents. Viscosity: 90 cps. Refractive Index: 1.484

Size: 100ml, 500ml Cat. #: 24214

Control Microscope Slides



This slide allows the control specimen and the patient's specimen to be on the same slide with positive identification of both specimens. Identical Patient and Control stain procedures. The slide has a frosted end for easy marking and special coating for enhanced sample adhesion to the slide.

Size: 1 box (72 slides) Cat. #: 24012

Cover Slips for Microscope Slides, Glass

Square 22mm x 22mm x .13-.17mm thick Size: 1 box Cat. #: 21913
Rectangular 22mm x 30mm x .13-.17mm thick Size: 1 box Cat. #: 23999
Rectangular 24mm x 40mm x .13-.17mm thick Size: 1 box Cat. #: 24070

Disposable Tungsten Carbide Blades with Holder Starter Kit



Blade holders are machined from non-corrosive nickel silver and provided with a satin finish. Internal components are made from stainless steel. The blade support ledge covers the full length of the holder providing constant blade height. Starter Kit is equipped with all tools and hardware needed for installation and 2 disposable blades.

Size: 1 kit Cat. #: 24235

Disposable Tungsten Carbide Blades

100% solid high grade tungsten carbide. Recommended for hard tissue, bone or material embedded in MMA or GMA, frozen.

Size: 1 pkg (2 blades) Cat. #: 24234

Microtome Blades, Disposable

Shur/Sharp blades represent the ultimate in technology. Chatterless and compression-free ribbons will become routine for all types of tissue. For use with AO or other high profile blade holders.

Size: 1 pkg (60 blades, Regular) Cat. #: 22381

Size: 1 pkg (35 blades, Heavy Duty) Cat. #: 22380

Size: 1 pkg (50 blades, AO Reichert) Cat. #: 22080

Mowiol® 4-88

High quality anti-fade medium to be used for immunofluorescence, as well as many molecular biology applications. It hardens and has the same refractive index as immersion oil. If used for immunofluorescence applications, the addition of glycerin is recommended. Poly[vinyl alcohol] 88% hydrolyzed.

Size: 500g Cat. #: 17951

Routine Stains

PolyGlass Coverslipping Medium

Non-water soluble (xylene/toluene) liquid coverslipping media designed to eliminate the use of coverslips. Non-yellowing and scratch resistant, PolyGlass simplifies the protection of prepared slides. The refractive index is near 1.48 and can be removed if necessary by soaking in toluene or xylene. Ideal for uneven thick sections that cause air bubbles under a coverslip with routine procedures. Viscosity: 149 cps.

Size: 120ml, 6 x 120ml Cat. #: 22253

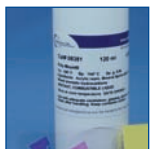
PolyGuard Paraffin Repellent



Xylene free paraffin repellent, PolyGuard is used to put a protective coating on surfaces exposed to paraffin as well as to clean adhering paraffin off laboratory counterparts and equipment. PolyGuard will help keep your equipment and countertops clean and tidy.

Size: 120ml, 6 x 120ml Cat. #: 21168

Poly-Mount®



Crystal clear medium providing superior optical clarity and preserving most biological dyes with little or no fading when slides are stored in light tight containers. The viscosity permits bubble-free applications with minimal spreading and excellent adhesion of coverslips. Poly-Mount is perfect for mounting and long term storage. Non-water soluble, miscible with toluene and xylene. Viscosity: 192 cps. Refractive index: 1.484

Size: 120ml, 940ml Cat. #: 08381

Plain Microscope Slides

Made of high quality glass guaranteed to be precleaned. Slides are ground smooth and free of sharp cutting edges.

Size: 1 box (72 slides) Cat. #: 07441

Micropure Microscope Slides

Manufactured with optical quality pure glass, Micropure slides contain 47% less iron than water white slides. This allows visualization of true sample color. They have better hydrolytic resistance, resist leaching/clouding and feature increased wettability. 25mm x 75mm, sandblasted.

Size: 1 box (72 slides), 1gross Cat. #: 22245

Tissue Tack Microscope Slides™ (Plus® Glass Slides)



Treated with a specially formulated aminoalkylsilane, Tissue Tack slides provide a positively charged surface, which permits instant coupling of negatively charged tissue sections. Slides are available with a white label.

Size: 1 box (72 slides) Cat. #: 24216

Poly-L-Lysine Coated Microscope Slides



Slides are coated with Poly-L-Lysine to permit electrostatic coupling of sample to slide. The relative adhesion level permits easier manipulating of samples than with silane coated slides. Use of Poly-L-Lysine Microscope Slides does not affect staining procedures. 25mm x 75mm x 1mm

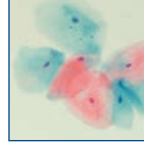
Size: 1 box (72 slides) Cat. #: 22247

Immunofluorescence Microscope Slides

Durable teflon coating which is acetone-resistant, autoclavable and hydrophobic. They measure 1 inch x 3 inches (25mm x 75mm), 1mm thick and are useful for all fluorescent materials. These glass slides have ten 6mm wells and are frosted on one end for easy labeling.

Size: 1 box (100 slides) Cat. #: 18357

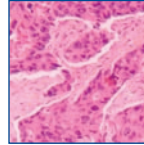
Gill's Hematoxylin #1 for Cytology - Progressive Type



Ideal for routine cytology staining. This single strength formulation optimally stains gynecological and non-gynecological specimens.

Size: 500ml, 1000ml Cat. #: 24242

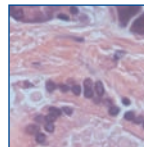
Gill's #2, double strength for Histology/Cytology - Progressive Type



Should be used when a stronger or darker nuclear stain is required for cytology samples or for immunohistochemical counterstaining.

Size: 500ml, 1000ml Cat. #: 24243

Gill's #3, triple strength for Histology - Progressive Type



Formulation of choice for routine histological staining when a darker nuclear stain is desired.

Size: 500ml, 1000ml Cat. #: 24244

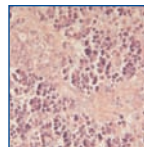
Gill's modified OG-6 & Gill's modified EA



Orange-6 and EA are the two cytoplasmic counterstain solutions that are used sequentially in the Papanicolaou staining method for clinical cytology. Gill's modified OG-6 and EA are stable in solution and give predictable high quality staining results not previously possible with other formulations.

Size: 500ml, 1000ml, 3.75L (OG-6) Cat. #: 09782
Size: 500ml, 1000ml, 3.75L (EA) Cat. #: 09783

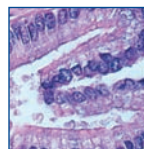
Harris Hematoxylin, Acidified (mercury-free) - Regressive Type



Use our Harris Hematoxylin for routine histology and cytology.

Size: 500ml, 1000ml Cat. #: 24245

Mayer's Hematoxylin - Progressive Type



Use in both cytology and histology. General purpose nuclear stain, used with hematoxylin and eosin staining. Used as a counterstain for immunohistochemistry procedures.

Size: 500ml, 1 liter Cat. #: 24821

Hematoxylin, C.I. 75290, certified (Natural black 1)

Nuclear protein stain and glycogen stain. General tissue stain for human, animal and/or VIR histology. Molecular Weight: 302.3

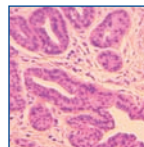
Size: 25g, 100g Cat. #: 02749

Eosin Y, 0.5% alcoholic solution, Acidic

Used as counterstain; contains acetic acid.

Size: 500ml, 1000ml, 3.75 liters Cat. #: 09859

Eosin Y, 1.0% alcoholic solution, Non-Acidic

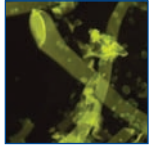


Used as counterstain; contains no acetic acid.

Size: 500ml, 1000ml Cat. #: 17269

Special Stains

Fungi-Fluor® Kit for Fungal Detection



The Fungi-Fluor Kit for Fungal Detection offers a quick fluorescent stain/counterstain procedure for various fungal organisms. The kit can be used to screen a variety of specimen types from sputum to skin scrapings for fungal detection.

Advantages:

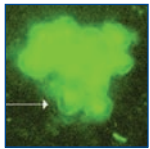
- More accurate than KOH preps
- Rapidly offers greater morphologic detail than PAS or silver stains
- Counterstain greatly reduces background fluorescence
- One kit stains over 500 slides

Specimen types:

- Fresh or frozen clinical specimen
- Paraffin or GMA-embedded tissues

Size: 1 kit (U.S. & outside Europe) Cat. #: 17442
Size: 1 kit (European orders only) Cat. #: 17442E

Fungi-Fluor® Pneumocystis Kit



Pneumocystis carinii is an organism that can cause *Pneumocystis carinii* pneumonia (PCP) in severely immune compromised patients. Early detection allows the introduction of appropriate treatment and may improve the chances of patient survival. The Fungi-Fluor Pneumocystis Kit offers a fast, fluorescent staining procedure for *Pneumocystis carinii* in bronchial specimens. **Kit contains:** 10ml of Fungi-Fluor staining solution and 10 positive unstained control slides.

Advantages:

- Direct *Pneumocystis carinii* cysts
- Fluorescent stain for 3 minutes to stain and read
- Slides can be reactivated if fluorescence dims
- Minimal prep and clean-up
- 100 tests per kit

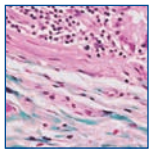
Size: 1 kit (U.S. & outside Europe) Cat. #: 22363
Size: 1 kit (European orders only) Cat. #: 22363E

Pneumocystis carinii control slides

Designed to be used with our Fungi-Fluor Pneumocystis Kit (Cat. # 22263), these slides are unstained. 10 slides per box.

Size: 1 box Cat. #: 22251

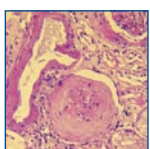
Gomori's Trichrome Stain Kit



Gomori's Trichrome is used to identify collagen fibers in kidney, liver and colon tissues. Gomori's One Step Trichrome refers to the multiple stain action of this reagent only. All components and counterstains are included in kit. **Results:** Nuclei - black, cytoplasm, keratin, muscle fibers - red, collagen & mucus - green or blue.

Size: 1 kit Cat. #: 24205

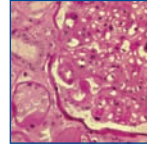
Multiple Stain Solution



Used in Tzanck preparations of herpetic lesions and differentiates acidophilic and basophilic structures. Multiple Stain is a replacement for the former Paragon Multiple Stain (PMS). Can be directly applied to frozen sections, epoxy, JB-4 or paraffin embedded sections. Differentiate various cytologic processes including basal cell carcinoma, squamous cell carcinoma, malignant melanoma, B-cell lymphoma, acute myelomonocytic leukemia, and metastatic breast cancer. **Results:** Cellular components - dark blue, connective tissue - pink.

Size: 1 kit Cat. #: 08824

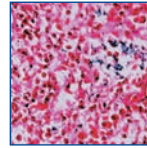
Periodic Acid Schiff's Stain Kit (PAS)



PAS techniques are used to demonstrate polysaccharides, neutral mucosubstances and basement membranes primarily in tissue. Kidney is the most sensitive control. The demonstration of glycogen is best represented by a section of liver with a digestion step used as a negative control for staining. Harris' Hematoxylin Acidified is supplied as a counterstain. **Results:** Fungi, glycogen - red to hot pink, nuclei - blue.

Size: 1 kit Cat. #: 24200

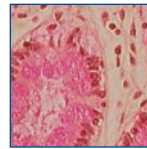
Iron Stain Kit, Prussian Blue



Prussian Blue or Perls' reaction is used to demonstrate ferric iron and ferritin. This is not a true staining technique, it is a histochemical reaction. The protein is split off by the hydrochloric acid, allowing the potassium ferrocyanide to combine with the ferric iron. This forms the ferric ferrocyanide or Prussian Blue color for which the stain is named. **Results:** Iron (*Hemosiderin*) - blue, nuclei - red, background - pink

Size: 1 kit Cat. #: 24199

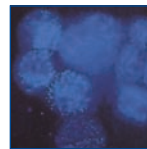
Rapid Mucin Stain Kit



Rapid Mucin Stain Kit will quickly determine the presence of mucin and assist in the direction of other special stains or immunohistochemistry to determine the origin of the mucin producing cells. **Results:** Mucin - deep red or rose, other tissue - yellow, nuclei - black.

Size: 1 kit Cat. #: 24208

TB Fluorostain™ Kit



Fluorochrome staining of mycobacteria in an acid-fast smear offers several advantages over traditional carbol-fuchsin methods. Lower magnification is required; fluorescent mycobacteria stand out brightly on a darkened background. Smaller numbers of mycobacteria are easily identified with a fluorescent stain. Our TB Fluorostain Kit offers a fast, fluorescent, microwaveable staining method for mycobacteria. **Kit contains:** 525ml of Staining Solution A, 500ml of Acid Solution B, 500ml Counterstaining Solution C

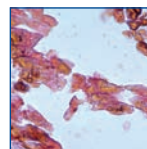
Size: 1 kit Cat. #: 22422

Villanueva Osteochrome Bone Stain

Useful for staining fresh, fixed, unembedded, or plastic-embedded sections of bone. Gives uniform and reproducible results. Useful in studying biopsy or postmortem tissue.

Size: 450ml Cat. #: 16280

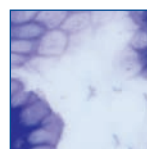
Von Kossa Method for Calcium Kit



Demonstrates only calcium phosphate and calcium carbonate salts. Used as a bone stain to indicate osteomalacia, or in other paraffin embedded tissues to stain calcium deposits seen in metabolic diseases.

Size: 1 kit Cat. #: 24633

Wright-Giemsa Stain Solution



Based on a commonly used Azure-Eosin formula, this stain is useful for blood films, parasites and bone marrow. Prepared from certified dyes.

Size: 470ml Cat. #: 08711

Adjuncts

Aqua-Poly/Mount



Water-soluble, non-fluorescing mounting medium. Formulated for mounting sections from aqueous solutions. Useful for immunofluorescent techniques. Aqua Poly/ Mount can also be used for frozen sections, fat stains and immuno-stains when aqueous mounting media is required. Use Aqua-Poly/Mount with most fluorescent dyes and stains.

Size: 20ml, 100ml, 5 x 20ml Cat. #: 18606

HistoHEME



Developed to assist histologists with bloody specimens such as placental fragments, bone marrow biopsies, liver, spleen and endometrial curettings which tend to harden after processing and dry out. HistoHEME allows for long clean paraffin ribbons without stopping to clean between each block.

Size: 250ml Cat. #: 24774

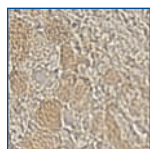
HOPE® Fixative Starter Kit*



Formalin free fixation technique for molecular pathology and research. Perform IHC on paraffin embedded tissue without further antigen retrieval steps. HOPE Fixation Technique does not completely denature or cross-link structural proteins, enzymes and nucleic acids. Kit includes paraffin.

Size: 1 kit Cat. #: 24884

Melanin Bleach Kit



Remove melanin pigment in cells of malignant melanomas and reveal cellular detail! Our Melanin Bleaching Kit saves time, by removing melanin pigment prior to incubation with primary antibody.

Size: 1 kit Cat. #: 24883

PolyFreeze (Frozen Mounting Medium)



Material sections flawlessly at routine frozen specimen thickness of 5-6µm and leaves no slide residue. Provides for -20°C cryostat LM sectioning in rapid set embedment. Water soluble.

Size: 1 case (6 x 120ml bottles) Cat. #: 19636

PolyGuard Paraffin Repellent



A xylene free paraffin repellent, PolyGuard is used to put a protective coating on surfaces exposed to paraffin as well as to clean adhering paraffin off laboratory counterparts and equipment. PolyGuard will help keep your equipment and countertops clean and tidy.

Size: 120ml, 6 x 120ml Cat. #: 21168

Poly-NoCal

Specially formulated solution of high purity hydrochloric acid and EDTA. Designed for rapid decalcification of fixed tissue sections.

Size: 1 liter Cat. #: 24164

Poly-NoCal & Fixative

Formic acid and formaldehyde based solution designed to fix and decalcify in one easy step. Small specimens, such as bone marrow, soften in four hours.

Size: 1 liter Cat. #: 24163

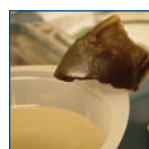
Poly-NoCal End Point Determination Kit



Includes all the necessary materials you need to determine endpoint decalcification, accurately, consistently and conveniently. Control of decalcification is an important part of tissue morphology. Over-decalcification interferes with nuclear and cytoplasmic staining and also destroys cell structure. Under-decalcification causes poor dehydration and infiltration during processing and also results in sectioning problems.

Size: 1 kit Cat. #: 24119

Soft Nail



Made for really hard complex keratinized hair, nail and skin samples common in Mohs histology laboratories. Soft Nail is a unique formulation to soften keratin to allow for cutting, (not a decalcification solution).

Size: 250ml Cat. #: 24775

Soft Block



Unique formula for softening difficult to cut tissue in paraffin. Effective on bone, nails and tissue. Soft Block is environmentally safe, special waste disposal is not required and will not damage equipment.

Size: 500ml, 1 gallon Cat. #: 24616

Going Green?* Polysciences, Inc. products can help you get there!

Looking for green chemistry alternatives to your current line of laboratory chemicals and reagents? Here are just a few products we offer that improve laboratory safety and provide greener alternatives.

Clear-Advantage Xylene Substitute (Cat. #24770)

GemCut™ Paraffin (Cat. #24361-24366)

Aqua-Poly/Mount (Cat. #18606)

Flash Dip FNA/H. Pylori Stain Kit (Cat. #24606)

Micro-Cut Paraffin (Cat. #24198, 24201, 24202)

CitraMount™ Medium (Cat. #24214)

PolyGuard Paraffin Repellent (Cat. #21168)

PolyFin® Paraffin (Cat. #19562)

HistoHEME (Cat. #24774)

PolyFreeze (Frozen Mounting Medium) (Cat. #19636)

Peel-A-Way® Molds (Cat. #18985, 18986, 18646)

Mowiol® 4-88 (Cat. #17951)

Terry's Polychrome Methylene Blue (Cat. #09978)

PolyTransport Buffer (Cat. #24311)

Soft Block (Cat. #24616)

Learn more by visiting www.polysciences.com/greenlab

*Does not contain mercury, formalin, zinc and xylene. Please dispose of materials according to local, state and federal regulations.

Mohs & G.I. Laboratory Reagents

Fixatives

24607	Fast Fix (Frozen Fix)
04018	Formaldehyde, 10%, methanol free, Ultra Pure
18814	Formaldehyde, 16%, methanol free, Ultra Pure
08379	Formalin, 10%, neutral, phosphate buffer
24355	Hartmann's Fixative (modified Davidson's fixative)
24354	Hollandes Fixative

Slides

24012	Control Microscope Slides
21911	Frosted Microscope Slides
22245	Micropure Microscope Slides
07441	Plain Microscope Slides
22247	Poly-L-Lysine Coated Microscope Slides
21912	Super Frosted Microscope Slides
24216	Tissue Tack™ Microscope Slides

Cover Slips

23999	Cover Slips, Glass, 22mm x 30mm
03929	Cover Slips, Glass, 11mm x 22mm
21913	Cover Slips, Glass, 22mm x 22mm
24070	Cover Slips, Glass, 24mm x 40mm
24071	Cover Slips, Glass, 24mm x 50mm
24072	Cover Slips, Glass, 24mm x 60mm
16601	Cover Slips, Plastic

Mounting Media

18606	Aqua-Poly/Mount
24214	CitraMount™ Medium
24607	Fast Fix (Frozen Fix)
17951	Mowiol® 4-88
19636	PolyFreeze (Frozen Mounting Medium)
22253	PolyGlass Coverslipping Medium
08381	Poly-Mount®
24176	Poly-Mount® Xylene
16672	Tissue Tack™ Adhesive

Clearing Agents

09860	Alcohol Reagent (100%), histology grade
24770	Clear-Advantage Xylene Substitute
22463	ParaClear Odorless Xylene Substitute
08389	Xylene, histology grade

Staining

24819	Ammonium Blue
09859	Eosin Y, 0.5% alcoholic solution, Acidic
17269	Eosin Y, 1% alcoholic solution, Non-Acidic
24606	Flash Dip FNA/H. Pylori Stain Kit
24242	Gill's Hematoxylin #1
24243	Gill's Hematoxylin #2, double strength
24244	Gill's Hematoxylin #3, triple strength
09783	Gill's modified EA
09782	Gill's modified OG-6
24245	Harris Hematoxylin, Acidified (mercury-free)
24820	Lithium Blue
24772	Marking Dye for Tissue - Seven Color Kit
24821	Mayers Hematoxylin
24200	Periodic Acid Schiff's Stain Kit
24605	Scott's Bluing Reagent

Electron Microscopy Reagents

24300	Embed-It™ Low Viscosity Epoxy Kit
04018	Formaldehyde, 10%, methanol free, Ultra Pure
18814	Formaldehyde, 16%, methanol free, Ultra Pure
00377	Glutaraldehyde, Biological Grade, 50%
18428	Glutaraldehyde, EM Grade, 50%
02746	Ilford Nuclear Research Emulsion - K5
17537	Ilford Nuclear Research Emulsion - K5D, prediluted
02747	Ilford Nuclear Research Emulsion - L4
02757	Ilford Nuclear Research Emulsion - K2
7717PA	Ilford Nuclear Emulsion Plate - L4 (25µm, 1" x 3")
7717PB	Ilford Nuclear Emulsion Plate - L4 (50µm, 1" x 3")
7717PC	Ilford Nuclear Emulsion Plate - L4 (25µm, 3" x 3")
21953	Ilford Rapid Fixer
21956	Ilford Universal Stop Bath
17324	Immuno-Bed Kit
00226	JB-4® Embedding Kit
18570	JB-4® Plus Embedding Kit
17412	L.R. Gold Embedding Media
17411	L.R. White Embedding Media
17413	L.R. White Accelerator
0972A	Osmium Tetroxide, 4% solution
17734	Osteo-Bed Bone Embedding Kit
00380	Paraformaldehyde EM Grade
21447	Uranyl Acetate 98%, ACS Reagent
24762	Uranyl Formate

Certified Dyes

04539	Acridine Orange, C.I. 46005
22279	Acridine Yellow G, C.I. 46025
19175	Alcian Blue, C.I. 74240
03336	Biebrich Scarlet, C.I. 26905
02729	Carmine, C.I. 75470
02730	Chlorazole black E, C.I. 30235
04352	Cibacron blue F3GA, C.I. 61211
02736	Congo red, C.I. 22120
03707	Coomassie® Blue G250, C.I. 42655
00352	Coomassie® Blue R250, C.I. 42660
21063	Cresyl violet acetate
00022	Crystal violet 3, (Genetian) C.I. 42555
16799	Direct red 81, C.I. 28160
02740	Eosin Y, C.I. 45380
02745	Fast green FCF, C.I. 42053
00373	Fluorescein isothiocyanate, isomer 1 (FITC)
06342	Fuchsin, Basic (Pararosaniline), C.I. 42500
00635	Fuchsin, Basic (Rosaniline), C.I. 42510
05587	Gallamine blue, C.I. 51045
01005	Hematein, C.I. 75290
02749	Hematoxylin, C.I. 75290
02753	Light green SF, yellowish, C.I. 42095
02760	Methyl green, C.I. 42590
04220	Methylene blue chloride, C.I. 52015
00915	Neutral red, C.I. 50040
09773	Nuclear fast red, C.I. 60760
06317	Oil red O, C.I. 26125
00968	Orange G, C.I. 16230
01070	Protargol S™
18614	Pyronin Y, C.I. 45005
02782	Safranin O (Basic Red 2), C.I. 50240
09400	Sirius red, C.I. 35780
02783	Tetrachrome stain (MacNeal)
01220	Thionin, C.I. 52000
01234	Toluidine blue O, C.I. 52040
15931	Toluidine blue O (purified), C.I. 52040
01294	Trypan blue, C.I. 23850
02785	Wright Stain